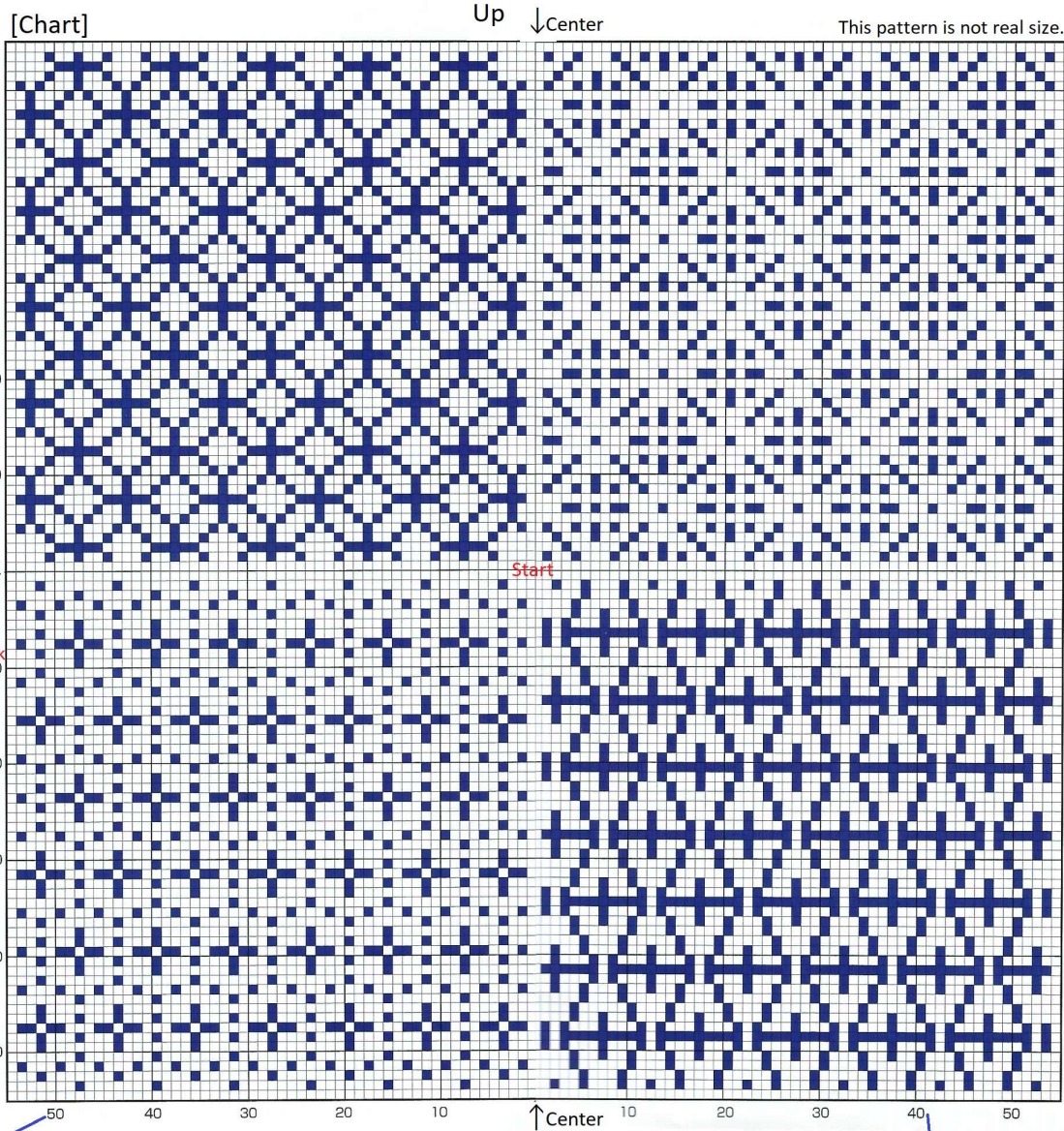


No. 7533 藍 "A-I"

\* This chart is for explanation in English. When you start Cross-stitching, start with a big chart in Japanese.

It cannot be a coaster after stitching is finished. If you would like to make a coaster, first cut the cloth into 4 pieces and stitch each pattern.



七宝つなぎ: Shippo-Tsunagi

It seems that four circles are overlapped on the four corners of one circle and are continuous up, down, left and right.

The circle means happiness, and the pattern that continues endlessly in all directions is still often used as an auspicious pattern.

Arrows in the top & side & bottom indicate the center of the design.

Tip: It will be easier to count if you mark vertical and horizontal center lines with a thread.

十入り亀甲: Kikko / Turtle shell

It seems that the hexagones are joined together and a cross is put in it. It is called Kikko (a turtle shell) because its shape resembles a turtle shell. The turtle is a symbol of longevity.

Line numbers help you keep track of where you are

藍色 "A-I" color / Indigo color

"A-I"/Indigo color refers to a slightly greenish blue derived from the plant dye indigo that has been used for a long time in Japan.

Line numbers help you keep track of where you are

All stitches are 3 strands.

Comparison tabel / Materials

■ Cross stitch 3 strands

色	糸番号	糸色名	セット糸量
■	355	Indigo-blue	4 skeins

● Check the stated thread amount

\*The color of the grid chart and the color of the actual #25 floss are different.

Please refer to the image on the cover.

Diagonal grid

斜格子に米字: NaNaMe-Goshi / Diagonal grid

It seems that it is made by the intersection of diagonal lines.

\*Start stitching

Start from the middle of the pattern.

Center

立涌: Tate-waku

A pattern in which wavy curves are lined up facing each other.

It shows how water vapor is boiling up.