

# Instructions of Tatami-edge Bag (Vertical) translated by Keiko Clark

## Material list (All sizes include seam allowance)

- A: One roll of Tatami-edge tape, cut into 10 strips of 28" (70cm) for main body, and 2 strips of 16" (40cm) for facing.  
 B: 21" (52cm) x 24" (60cm) fabric for bag lining.  
 \* Depending on the types of tape material, Tatami-edge tapes are semi-transparent. You should use this characteristic to show through the lining fabric or possible to make a bag without the lining.  
 C: 1 pair of purse handle: Inazuma purse handles as you like.  
 D: 1 pair of magnetic snap: Inazuma AK-38-19, Size: 3/4" (18mm).



Tatami-edge Tape  
11yard (10m) /roll

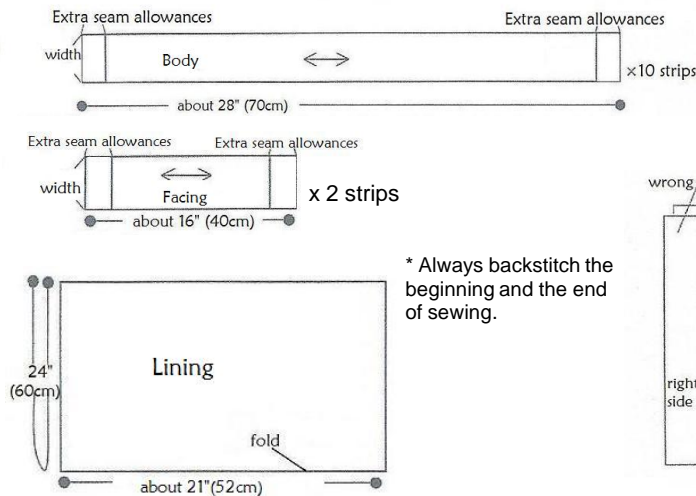


Finished size (without handles)  
14" W x 10 3/4" H x 3 1/2" D  
(35cm W x 27cm H x 9cm D)

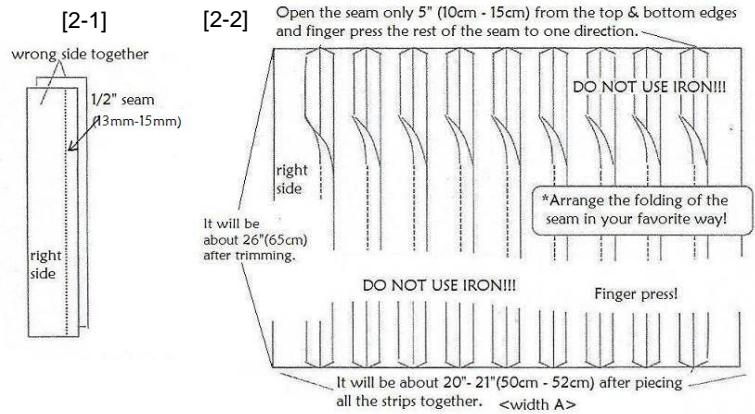
\* Nakajima Tatami-edge Tape is the product which was made to enjoy its original characteristic as it is used on Tatami-edge. Shrinkage, discoloration, fading might occur by heat, water or direct sun light. **Do Not iron or wash this product!!**

- \* Size 90/14 sewing machine needles are recommended.  
 \* Use chalk or color pencil for marking.

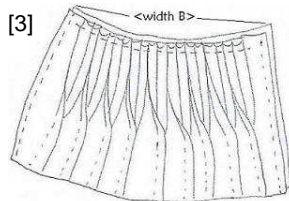
[1] Cut ten 28" (70cm) strips for main body, two 16" (40cm) strips for bag facing from tatami-edge tape.



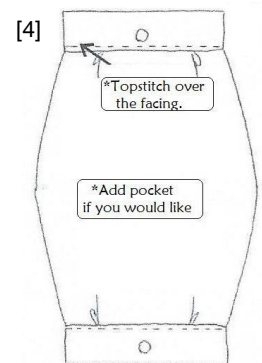
[2] Place two 28" (70cm) tapes right sides together and sew them together at 1/2" (13mm) from the edges. Open the seam only 5" (12.5cm) from the top & bottom edges and finger press the rest of the seam to one direction. DO NOT USE IRON!! Continue to sew all ten strips in a same manner. Cut the top and bottom edges off to measure 26" (65cm) in length. Measure the width and note as width A.



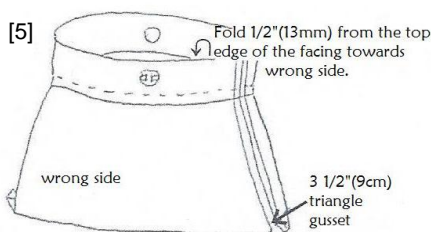
[3] Make a small tuck between the seams of the strip so that the edges of the opened seam area will meet together. Repeat to make tucks in all the strips except for the first and the last strips. Stitch at 1/4" (7mm) from the edge to hold the tucks. Measure the width of tucked edge and note as width B. Fold in half wrong side together and sew 1/2" (13mm) from the side edges. Finger press open the side seam. Make triangle gusset (3 1/2" (9cm)) on the bottom corners. Fold 1/2" (13mm) from the top openings towards wrong side and finger press.



[4] Cut two facing strips in the length of width B. Cut the lining fabric in the length 21" (52cm) x width A. Align the center and the both side edges of the facing strip and the lining width, then fold the tucks in 2 places with the extra fabrics of the lining. Sew them together with 1/2" (13mm) seam and finger press towards facing. Topstitch over the facing. Repeat on the other side.



[5] Fold the lining bag in half right sides together and sew both sides with 1/2" (13mm) seam. Open the seam and press. Make triangle gusset (3 1/2" (9cm)) on the bottom corners. Fold 1/2" (13mm) from the top edge of the facing towards wrong side and press. Attach the magnetic snap in the center of the facing.



[6] Insert the lining bag into the main bag. Place desirable handles between the layers and baste them. Align the edges of the openings and topstitch to complete!

